

Körber Supply Chain Benchmarking 2022

Facility Optimization

Supply chain benchmarking survey

In late 2021, Körber completed an in-depth research project to pinpoint the underlying factors that drive supply chain complexity. These were:

-  **Labor Engagement, Safety and Efficiency**
-  **End Customer Experience**
-  **Agility and Resilience**
-  **Sustainability**
-  **Digitization and Process Automation**
-  **Facility Optimization**

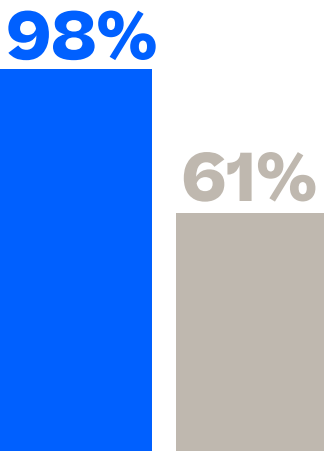
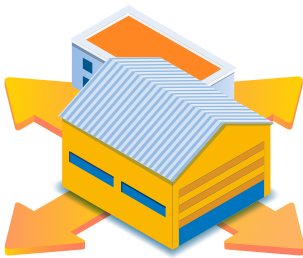
The company then launched a survey to assess current best practices and establish benchmarks. Based on their responses, participants were scored and categorized into four maturity levels:

-  **Initiating**
Significant potential for growth
-  **Advanced**
Strong performer with established capabilities
-  **Developing**
Solid performer with average capabilities
-  **Leader**
Top performer with established best practices

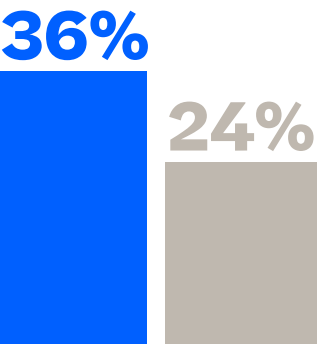
What we found

Today, new warehouses are built with efficiency in mind. However, with new industrial space in short supply, supply chain professionals need to improve existing facilities to maximize efficiency.

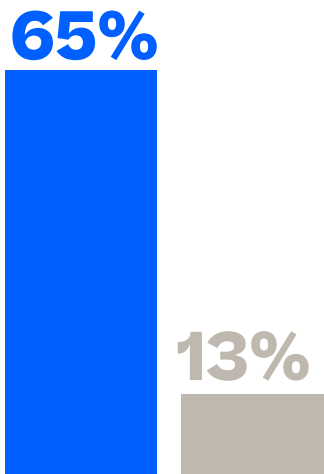
The survey results suggested that businesses understand the need to optimize their facilities, but many have yet to adopt the necessary technology.



Both leaders (98%) and advanced supply chains (61%) are deploying flexible automation solutions such as autonomous mobile robots (AMR)
Robots offer multiple benefits, including quicker picking, the ability to traverse denser racking, and a reduced physical burden on workers.

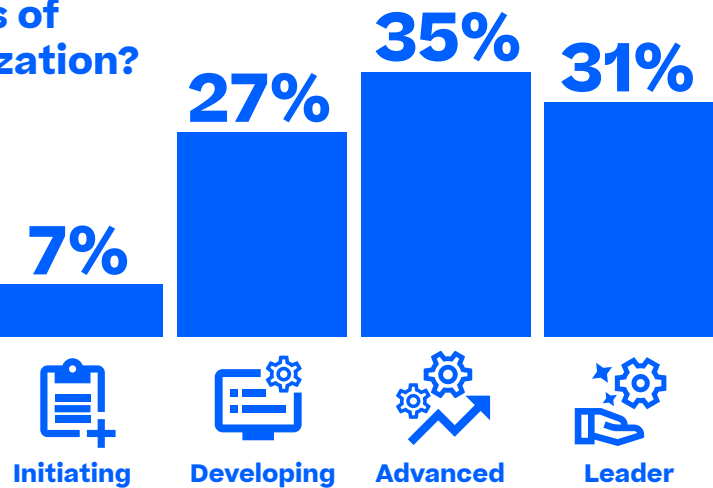


Europeans lead North Americans with planning innovation projects – 36% and 24%, respectively
These include deployments of highly innovative technologies, such as machine learning, augmented reality and real-time locating systems



65% of leaders, but only 13% of advanced supply chains, have adopted preventive maintenance systems
Warehouses must continually monitor their equipment and make fixes to avoid unplanned downtime.

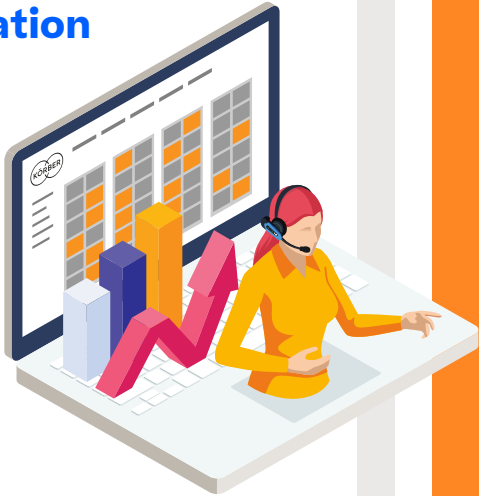
Breakdown: How mature are supply chains in terms of Facility Optimization?



Two keys to becoming a leader

1. Simulating optimization projects

Simulation and modeling software helps supply chain experts understand how proposed designs will impact operations and KPIs – and the expected ROI.



Plan facility improvements and assess their impact using modeling and simulation tools



2. Using your voice

Voice-directed systems allow workers to hear and confirm instructions through a headset. They significantly increase picking speed and accuracy.



Have been using voice-directed work systems for 2 or more years



“There is a correlation between the growth in warehouse worker capacity, the increasing amounts of ecommerce order fulfillment and the transition of warehouses handling full pallets to individual items. So, even though we have seen that capacity double, it’s still not keeping pace with the demand that we are seeing to support the volumes being shipped through warehouses.”

Andreas Bahke
Director of Sales & Business Development – AMR, Körber Supply Chain

Benchmarking your supply chain



To learn more about the areas covered in Körber’s 2022 Supply Chain Benchmarking survey, and to determine your supply chain’s strengths and weaknesses compared to industry leaders, visit benchmarking.koerber-supplychain.com

About the survey

For the 2022 Supply Chain Benchmarking Report, Körber commissioned management consultancy Roland Berger to conduct an online survey of 244 supply chain professionals across Europe and North America. Respondents self-identified as having management or executive responsibility within the supply chain function in an organization with 500 employees or more.

